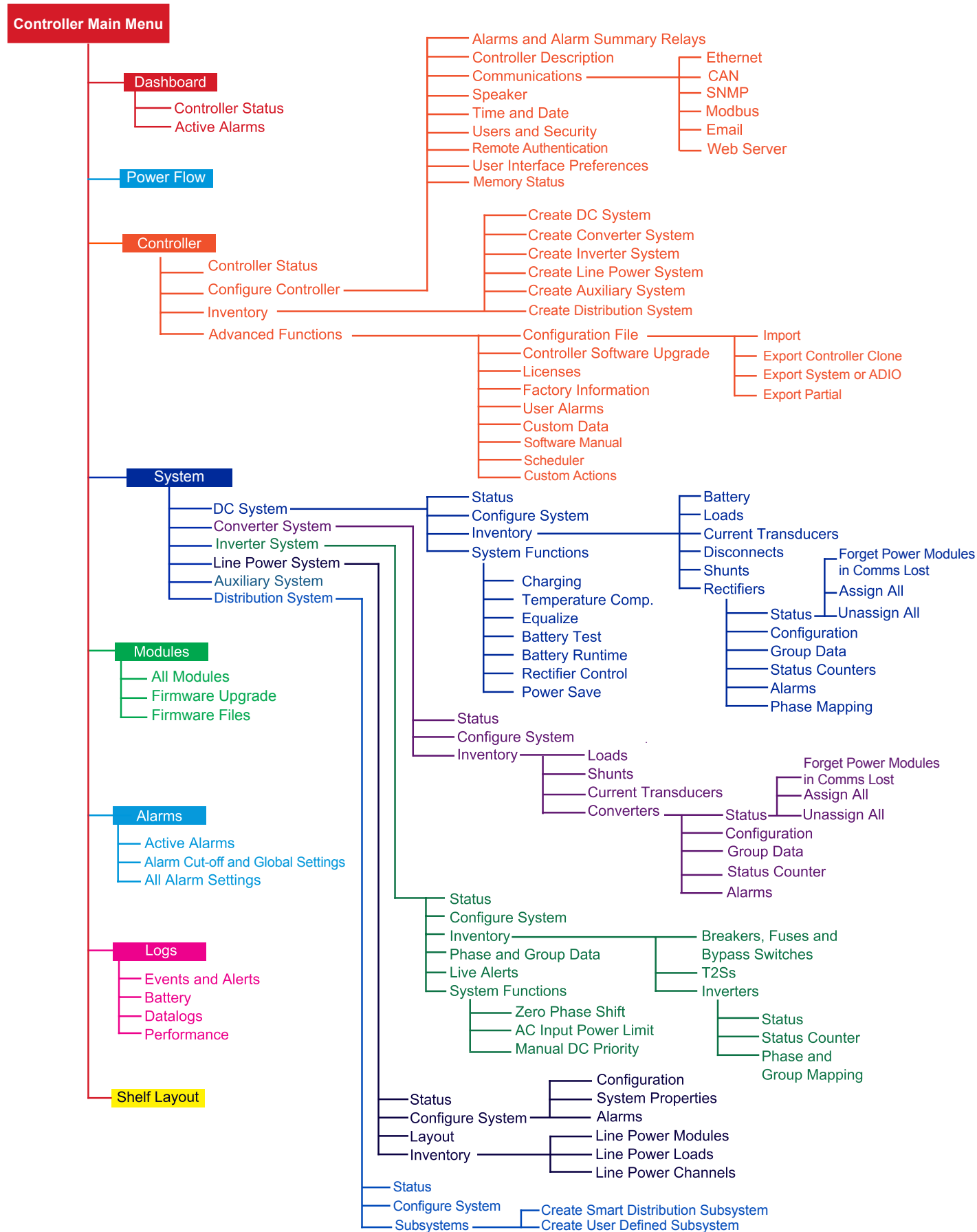


CXC HP Controller Quickstart

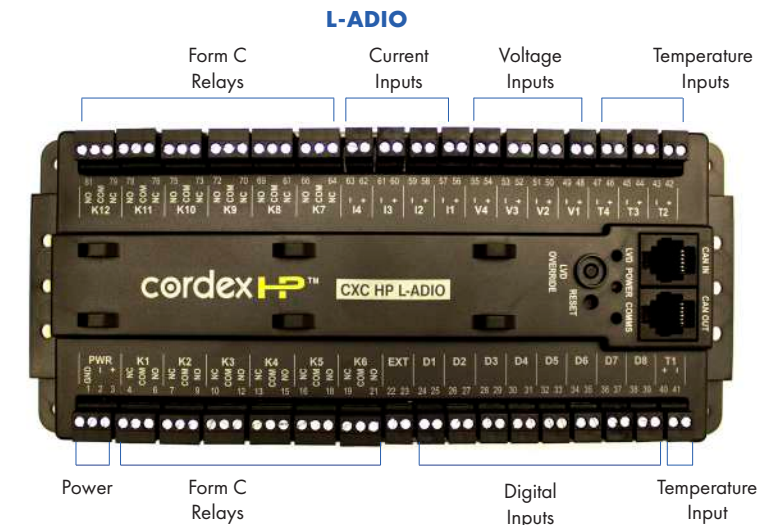


Introduction

This QuickStart Guide is intended to help users quickly connect the controller, set up users and permissions, set the date and time, set up and configure a system, SNMP, email, create alarms, datalogs, replace an ADIO as well as backup and restore. The back cover of this guide provides a full map of all the controller menus. For detailed information advanced product use, go to alpha.ca to download any associated manuals.

Modules Inventory and System Functions

A module is a device that communicates information. Modules will be CAN devices such as rectifiers, converters and ADIOs. Power system inventory are items that are directly involved in the flow of power through the system. For example, a rectifier is an inventory item but a controller or an ADIO is not. Other examples of system inventory are: rectifier, load, battery, disconnect, shunt, current transducer, and inverter breaker. The system functions are the major features of the system such as: charging, battery runtime and health estimation, rectifier control and monitoring and temperature compensation. Once inventory is in place you can configure and test system functions to ensure that it is working as intended.



Dashboard Features

The dashboard is the default view on both LCD and the web. You can work with the system directly from this area. It provides an up-to-date overview of the most critical system information.

Alarm Notifications

- Last active alarm based on priority
- Red for critical or major
- Amber for minor
- Blue for warnings

System Status Summary

- Battery voltage
- Total load current
- Total output power
- System type - DC, Line Power, Inverter, Converter

Controller Status

- OS version
- Software version
- Hardware version
- Device ID
- Current date and time

LCD Touchscreen Dashboard View

Active Alarms color coded alarms based on severity

System Status Single or dual panel options: system signals and system mode (DC and converter systems shown)

Maintenance Functions such as, alarm cutoff, replace ADIO, etc.

Information Serial number software and OS version

Menu Access all controller menus

Shortcuts access to most used menus *

Login or Logout

* Description and view of the Shortcuts menus inside



:RUOGLGHRSRUDWH2IILFHV			
Headquarter Germany Hansastrasse 8 D-91126 Schwabach Tel: +49 9122 79889 0 Fax: +49 9122 79889 21 Mail: info@alpha-outback-energy.com	Eastern Europe ee@alpha-outback-energy.com	France and Benelux fbnl@alpha-outback-energy.com	Russia russia@alpha-outback-energy.com
Middle East me@alpha-outback-energy.com	Spain spain@alpha-outback-energy.com	Africa africa@alpha-outback-energy.com	

Alpha Q2W/EEN/BJ GmbH reserves the right to make changes to the products and information contained in this document without notice. Copyright © 2020 Alpha and Outback Energy GmbH. All Rights reserved.