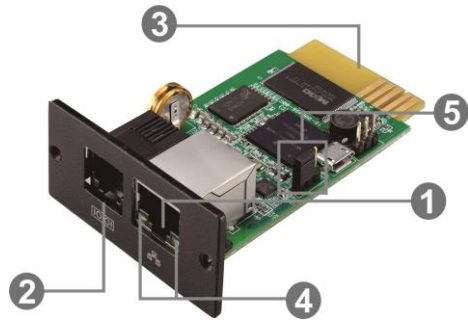


1. Overview



- ❶ Ethernet port (10/100Base-T)
- ❷ Sensor port/data transmission port
- ❸ Golden finger: connects to Inverter slot
- ❹ Ethernet port status LEDs
- ❺ Jumper setting to restore default setting

Ethernet port status LEDs:

100M LED	(Green)	On	Port is operating at 100Mbit/s.
		Off	Current web bandwidth is 10Mbit/s.
Link status LED	(Yellow)	Flash	Link Active
		Off	Card is not connected to the network.

Pin assignment for Jumper:

Pin #	Status	Description
Pin 1 & Pin 2	Closed	Normal operation
Pin 2 & Pin 3	Closed	After re-connecting utility, the IP address of SNMP web card and password will restore to default setting. Default static IP address: 192.168.102.230. Default password: 12345678.

NOTICE: After setting is restored to default, be sure to change the jumper setting to connect Pin 1 and Pin 2 for normal operation.

2. Installation and Connection

Follow the steps below to install and connect the SNMP web card:

Step 1: Remove the cover of intelligent slot on the back panel of Inverter and retain the screws.

Step 2: Slide the card into the open slot and secure it with the screws from step 1. (see **Diagram 2-1**)

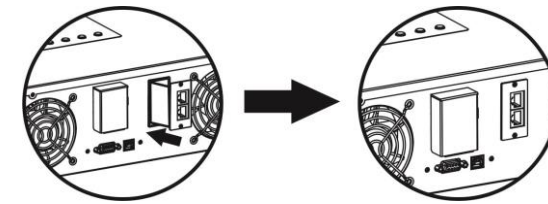


Diagram 2-1

Refer to **Diagram 2-2** for connecting the SNMP web card.

Step 3: Plug Ethernet cable to the Ethernet port (RJ-45) on the SNMP web manager.

Step 4: Use another Ethernet cable. Connect one end to the sensor port on the SNMP web manager and the other end to the optional environmental monitoring device.

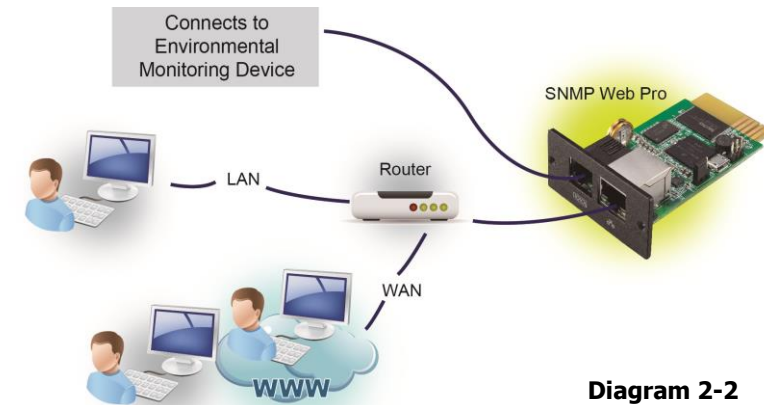


Diagram 2-2

3. Configuration

- a) Please install WatchPower monitoring software in your PC. After software is installed successfully, it will pop up a plug icon in the tray. SNMP manager will be automatically activated. Select "SNMP manager" by clicking right button of the mouse as shown in **Diagram 3-1**.

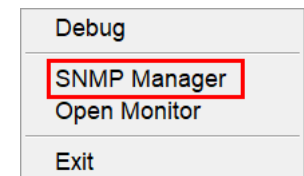


Diagram 3-1

- b) Enter specific IP address to search all SNMP devices in LAN. (The SNMP manager will automatically collect the IP address from sever by default via a DHCP server. If there is no DHCP server, it can be applied as the default static IP address 192.168.102.230,

default subnet mask 255.255.255.0, and default gateway 192.168.102.254 by changing the jumper cap position.) Users can modify IP address through web server of SNMP web pro card, SSH Client or SNMP web Manager.

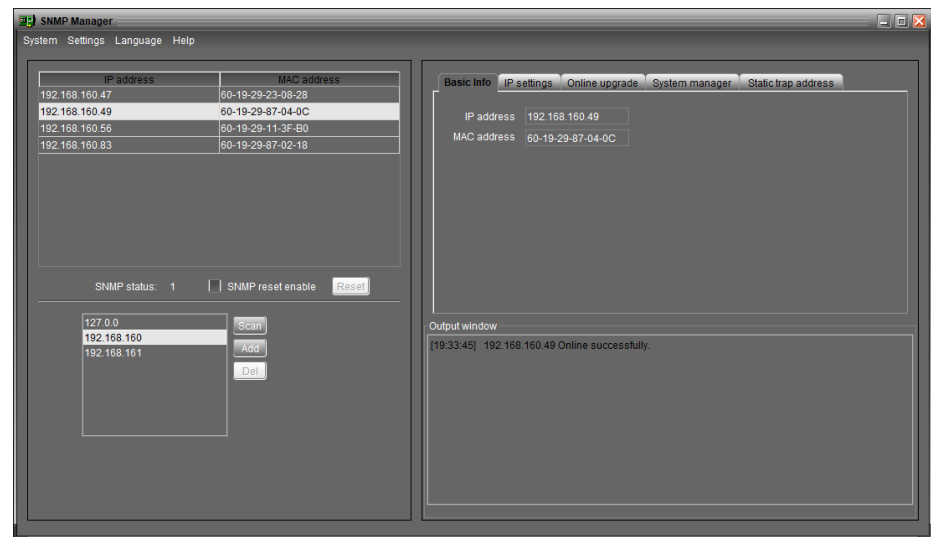


Diagram 3-2

- c) User can modify IP setting, online upgrade, password management, and static trap address setting in SNMP Web Manager interface. It is necessary to enter password for any modification. The default password is 12345678.

4. Monitoring

- a) Double click the selected device from the device list (refer to Diagram 3-2) to open web page as Diagram 4-1.

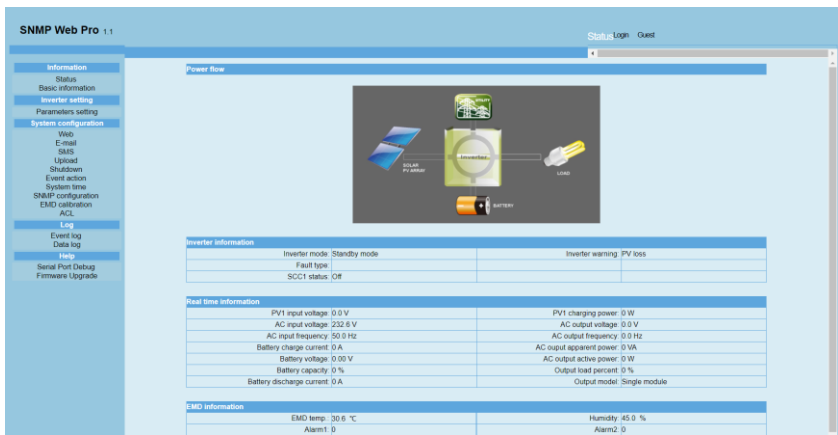


Diagram 4-1

Please check User Manual of SNMP Web Pro for detailed configuration.

- b) As shown in **Diagram 4-2**, select “Open Monitor” by clicking right button of the mouse.

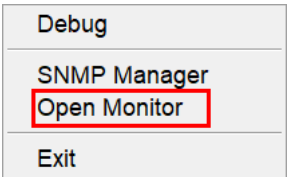


Diagram 4-2

Then, it will activate WatchPower software and SNMP devices will be listed on the left side of the pop-up window. Refer to **Diagram 4-3**.

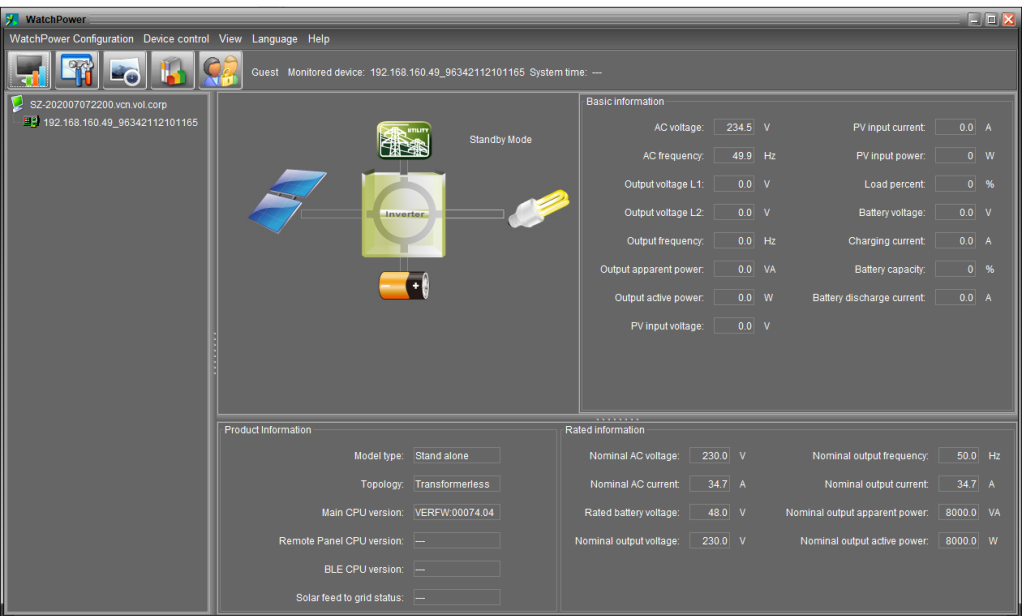


Diagram 4-3

Please check WatchPower software for detailed operation.

